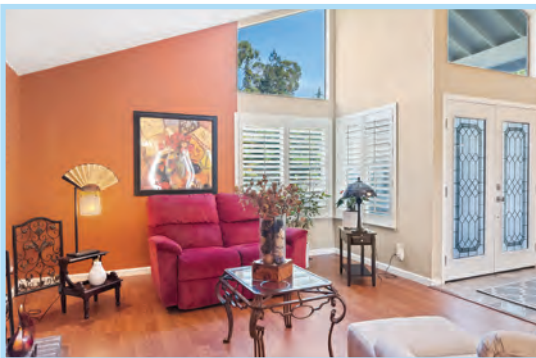


27 SHETLAND LANE, PLEASANT HILL



SADDLERIDGE COURT LOCATION IN PLEASANT HILL!

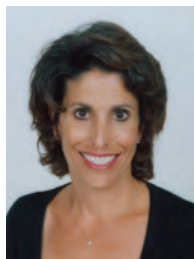
This home resides in a special highly-desired neighborhood of Saddleridge. Relax in the newly designed yard that boosts resort like living. Enjoy the green synthetic lawn (no water required) beautiful pavers and a gazebo perfect for entertaining friends and family. This three bedroom single level home offers easy living. Kitchen features gas stove, double oven, granite counters and a bright breakfast area. Enjoy the designer spa like oversized master bathroom with walk in shower, double sinks and an abundance of light. This bathroom was remodeled only months ago. Enjoy saving \$\$\$ with the solar. This home is at the end of a court and close to shopping, transportation and easy freeway access.



**3 Bedrooms • 2 Bathrooms • 2,056 SqFt •
Lot 11,748 SqFt • Built 1986 • MLS# 322092619**

*For more photos and info:
27ShetlandLane.com*

\$1,175,000



Jennifer Moore

707-319-1933

jmoore@coldwellbanker.com

DRE# 01329293



**COLDWELL BANKER
SOLANO PACIFIC**



JENNIFERMOORETEAM.COM

THIS INFORMATION IS DEEMED RELIABLE BUT IS NOT VERIFIED. EACH OFFICE IS INDEPENDENTLY OWNED AND OPERATED.

27 SHETLAND LANE, PLEASANT HILL



THIS INFORMATION IS DEEMED RELIABLE BUT IS NOT VERIFIED. EACH OFFICE IS INDEPENDENTLY OWNED AND OPERATED.